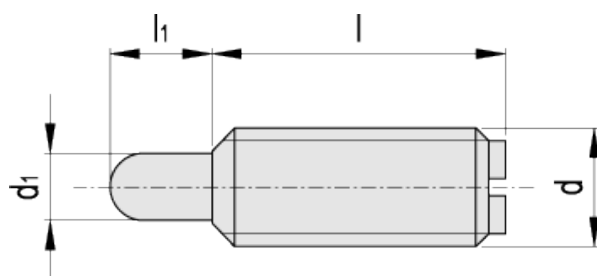


# EN 615.1-NI

## Threaded bolt spring plungers



american unit  
metric unit

Elesa Standards			Main dimensions				Spring pressure		Weight
With locking patch	Without locking patch	Description	d	l	d <sub>1</sub>	l <sub>1</sub>	Preload [lbf] [N]	Max. load [lbf] [N]	lbs g
Code	Code								
EN.933702	EN.933602	EN 615.1-6-32-BN*	6-32 -	0.37 9.5	0.04 1.1	0.06 1.6	0.5 2.2	1.5 6.7	0.002 1
EN.933704	EN.933604	EN 615.1-6-32-BSN*	6-32 -	0.37 9.5	0.05 1.2	0.06 1.6	0.5 2.2	2.5 11.2	0.002 1
EN.933712	EN.933612	EN 615.1-8-32-BN*	8-32 -	0.44 11.1	0.07 1.8	0.05 1.3	0.8 3.5	1.5 6.7	0.002 1
EN.933714	EN.933614	EN 615.1-8-32-BSN*	8-32 -	0.44 11.1	0.07 1.8	0.05 1.3	1.8 8	4.6 20.5	0.002 1
EN.933722	EN.933622	EN 615.1-8-36-BN*	8-36 -	0.44 11.1	0.07 1.8	0.05 1.3	0.8 3.6	1.5 6.7	0.002 1
EN.933724	EN.933624	EN 615.1-8-36-BSN*	8-36 -	0.44 11.1	0.07 1.8	0.05 1.3	1.8 8	5 20.5	0.002 1
EN.933732	EN.933632	EN 615.1-10-32-BN*	10-32 -	0.47 11.9	0.09 2.4	0.07 1.7	1 4.4	2.5 11.1	0.002 1
EN.933734	EN.933634	EN 615.1-10-32-BSN*	10-32 -	0.47 11.9	0.09 2.4	0.07 1.7	2.6 11.6	6.3 28.1	0.002 1
EN.933742	EN.933642	EN 615.1-1/4-20-BN*	1/4-20 -	0.53 13.5	0.12 3	0.08 2	1.1 4.9	3.5 15.6	0.004 2
EN.933744	EN.933644	EN 615.1-1/4-20-BSN*	1/4-20 -	0.53 13.5	0.12 3	0.08 2	3 13.4	9.7 43.3	0.004 2

Elesa Standards			Main dimensions				Spring pressure		Weight
With locking patch	Without locking patch								
Code		Description	d	l	d <sub>1</sub>	l <sub>1</sub>	Preload [lbf] [N]	Max. load [lbf] [N]	lbs g
EN.933762	EN.933662	EN 615.1-5/16-18-BN*	5/16-18 -	0.58 14.7	0.13 3.4	0.08 2.1	1 4.5	4 17.8	0.009 4
EN.933764	EN.933664	EN 615.1-5/16-18-BSN*	5/16-18 -	0.58 14.7	0.13 3.4	0.08 2.1	3.8 17	13 58	0.009 4
EN.933772	EN.933672	EN 615.1-3/8-16-BN*	3/8-16 -	0.63 15.9	0.19 4.7	0.11 2.8	1.5 6.7	4.5 20	0.011 5
EN.933774	EN.933674	EN 615.1-3/8-16-BSN*	3/8-16 -	0.63 15.9	0.19 4.7	0.11 2.8	4.5 20	16 71.4	0.011 5
EN.933782	EN.933682	EN 615.1-1/2-13-BN*	1/2-13 -	0.75 19	0.25 6.3	0.15 3.8	1.8 8	5.5 24.5	0.024 11
EN.933784	EN.933684	EN 615.1-1/2-13-BSN*	1/2-13 -	0.75 19	0.25 6.3	0.15 3.8	5 22.3	22.4 100	0.024 11
EN.933792	EN.933692	EN 615.1-5/8-11-BN*	5/8-11 -	1.06 27	0.31 7.9	0.22 5.5	2 8.9	8.5 38	0.026 12
EN.933794	EN.933694	EN 615.1-5/8-11-BSN*	5/8-11 -	1.06 27	0.31 7.9	0.22 5.5	7 31.2	43.5 194.2	0.029 13

\*Complete the description of the standard item needed by adding /LE for plungers with nylon locking patch.

#### Threaded body

AISI 303 stainless steel, screwdriver slotted head.

#### Standard executions

AISI 303 stainless steel bolt, stainless steel spring.

- EN 615.1-NI-BN: normal end force.
- EN 615.1-NI-BSN: heavy end force (marked with two lines).
- EN 615.1-NI-BN/LE: normal end force with locking patch.
- EN 615.1-NI-BSN/LE: heavy end force with locking patch (marked with two lines).

Nylon locking patch for applications subject to vibrations or to eliminate the need for check nuts. Not recommended for applications in soft materials. Countersink the mating thread at least .030 to .045 larger than the major diameter of the plunger to make its insertion easier.

